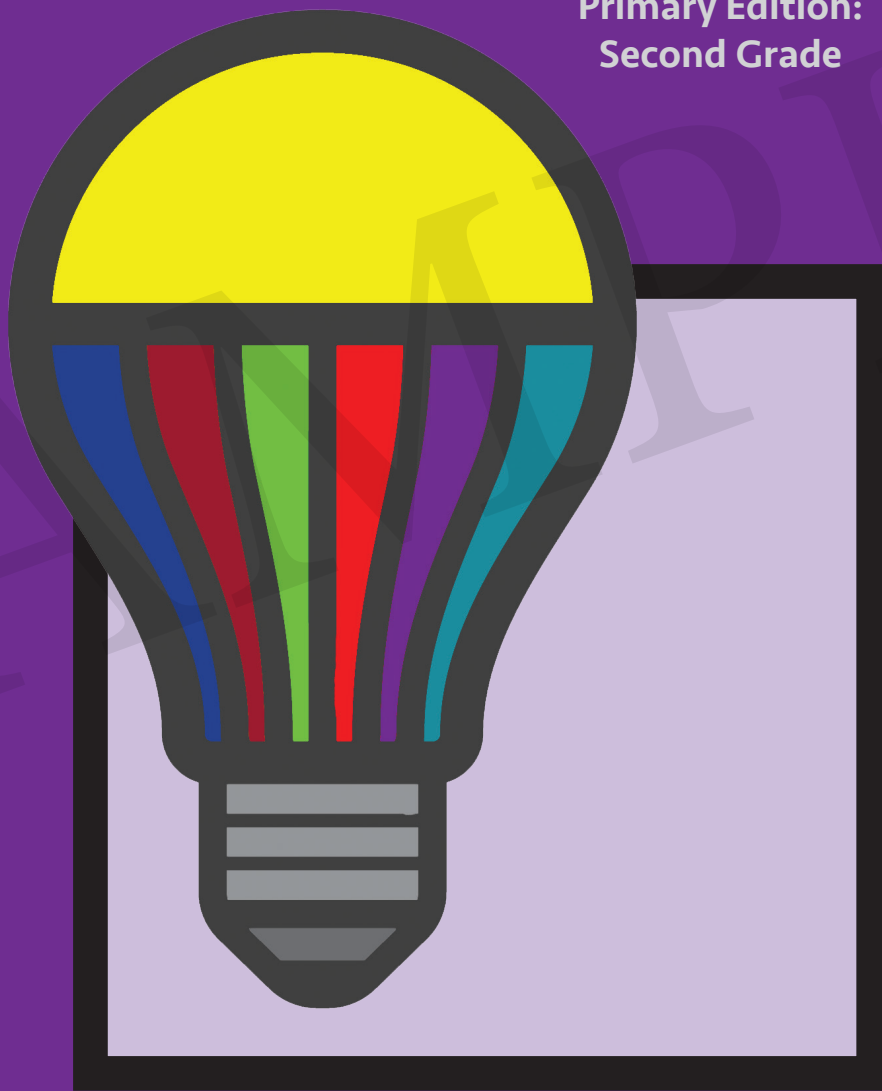


Space for Extending Comprehension Skills

SPECS Log

Primary Edition:
Second Grade



A Foundations & Frameworks Student Worktext

This SPECS Log belongs to:

Space for Extending Comprehension Skills

SPECS Log

Primary Edition: Second Grade

©2017 Briarwood Presbyterian Church, Birmingham, AL 35243.

Developed by Joanne Sellers Barbee, M.Ed.

and the second grade teachers at Briarwood Christian School, Birmingham, AL.

Published by Make Way for Books, Pelham, AL 35124.

No reproduction of materials contained in this SPECS Log allowed. (06.17)

Book Title _____ **Chapter/Page(s)** _____

SAMPLE



Comprehension Focus _____ Date _____

SAMPLE

Book Title _____ **Chapter/Page(s)** _____

SAMPLE

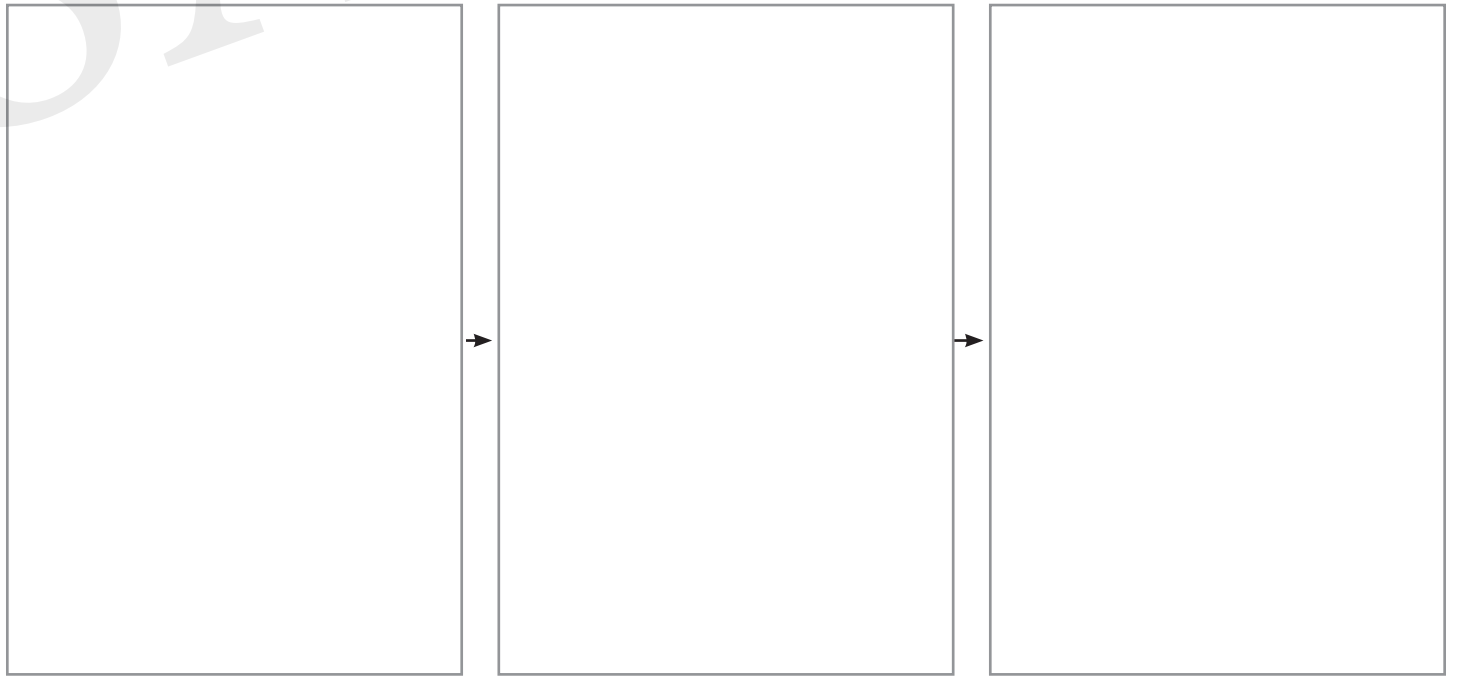


Comprehension Focus _____ Date _____

SAMPLE

Book Title _____ **Chapter/Page(s)** _____

SAMPLE



SAMPLE

Book Title _____ **Chapter/Page(s)** _____

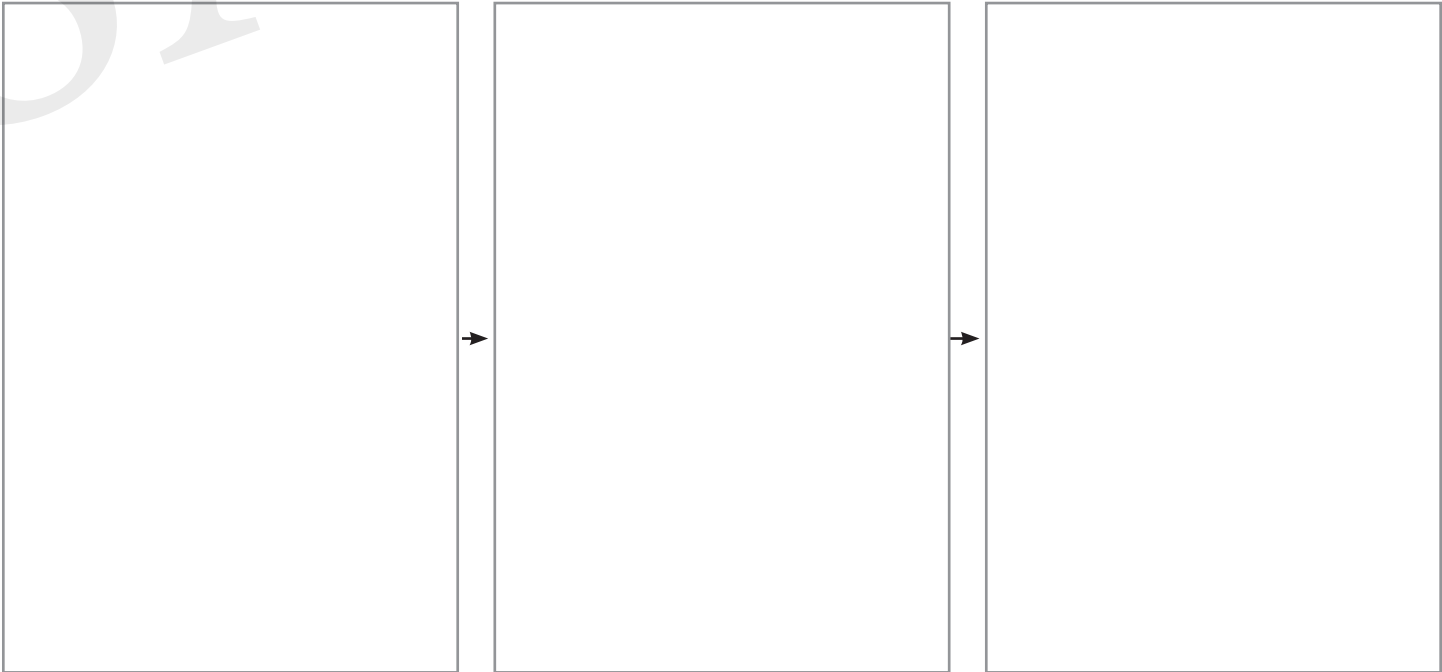
SAMPLE

	→		→	
--	---	--	---	--

SAMPLE

Book Title _____ Chapter/Page(s) _____

Lined writing area consisting of 13 horizontal lines.



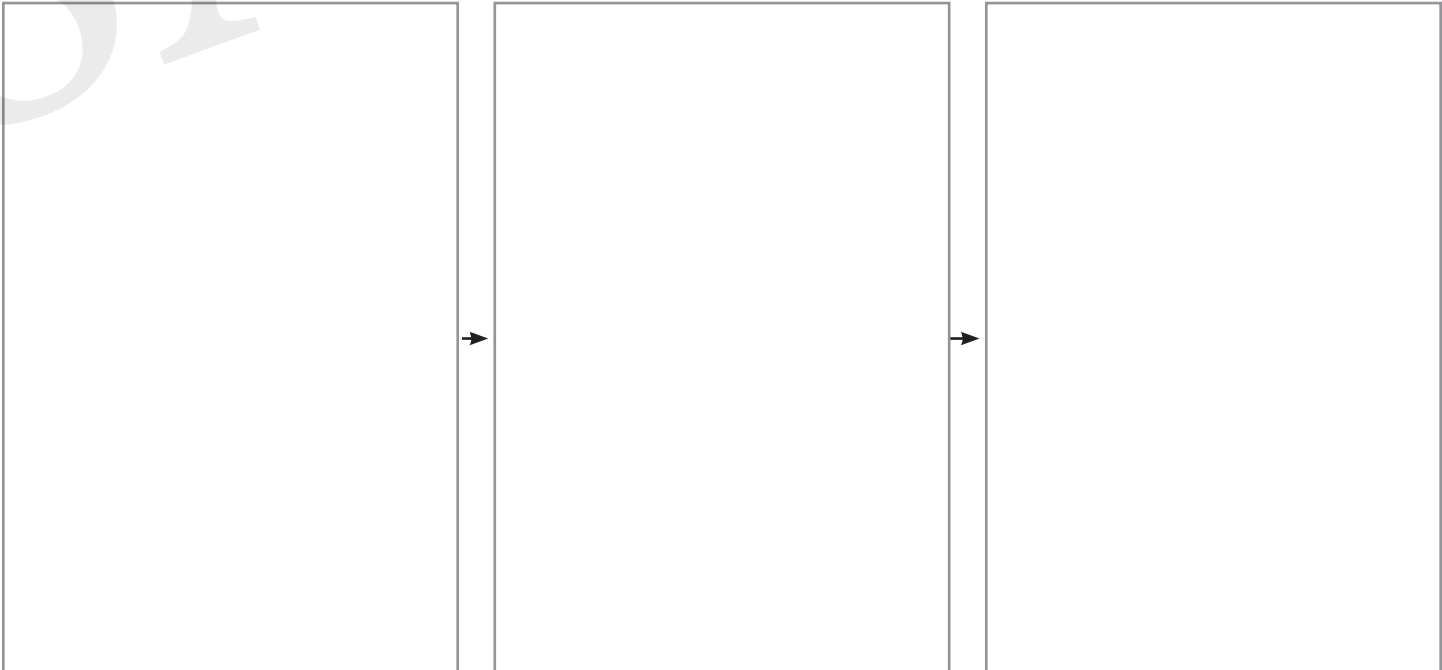
Comprehension Focus _____ Date _____

SAMPLE

SAMPLE

Book Title _____ **Chapter/Page(s)** _____

SAMPLE



SAMPLE

Book Title _____ **Chapter/Page(s)** _____

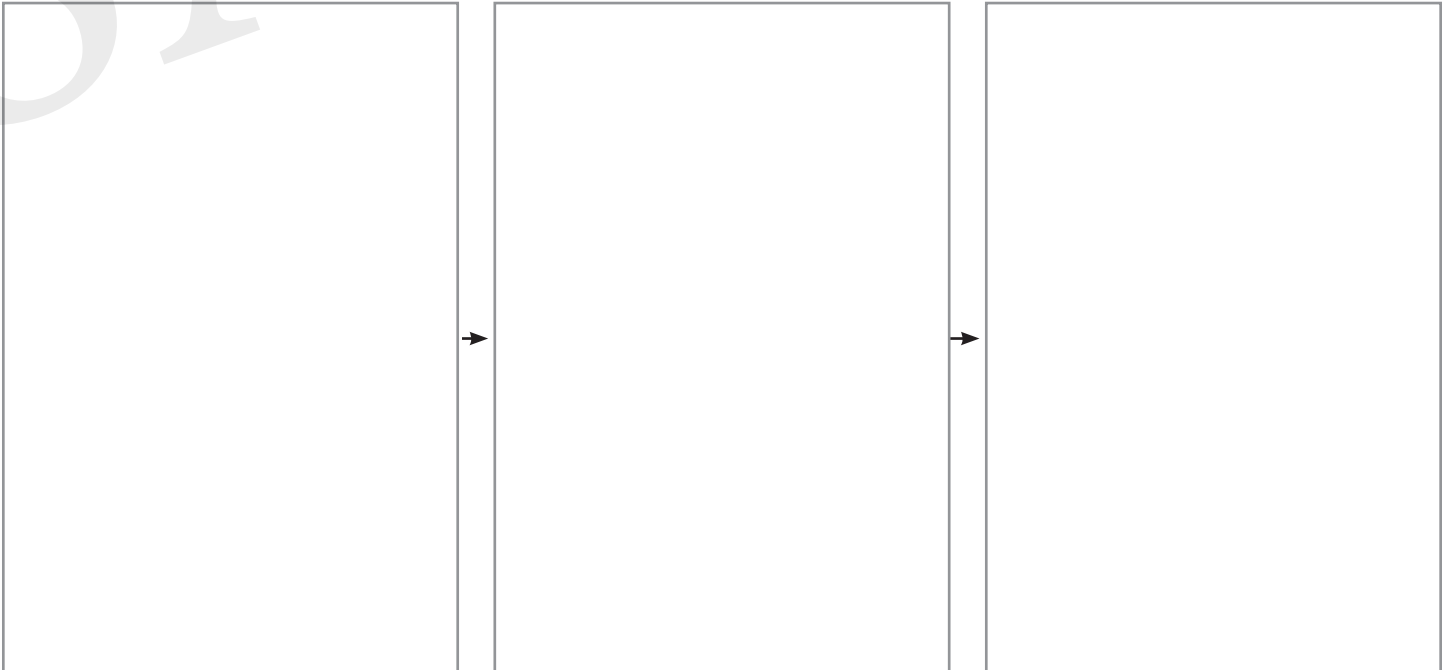
Blank lined writing area.

--	--	--

Comprehension Focus _____ Date _____

SAMPLE

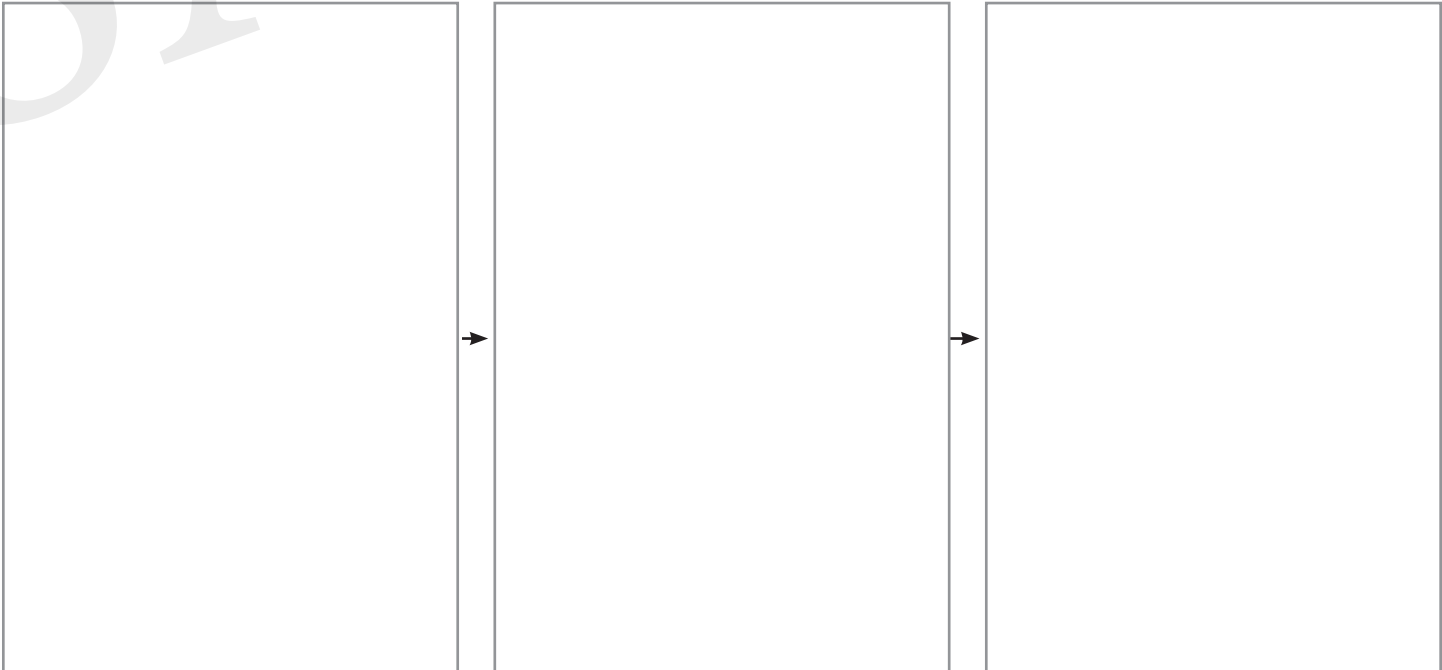
Book Title _____ **Chapter/Page(s)** _____



Comprehension Focus _____ Date _____

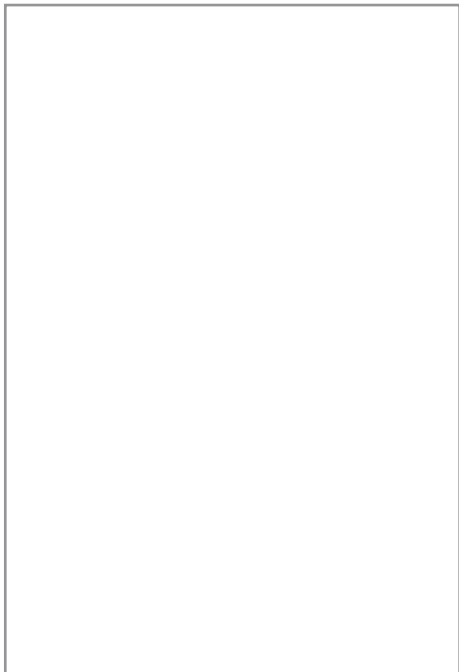

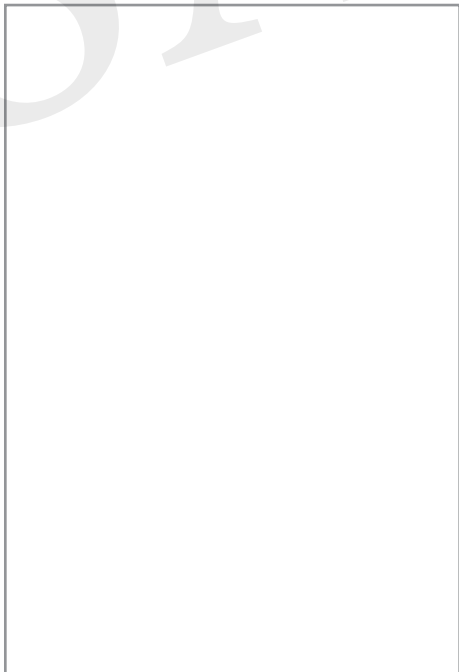
SAMPLE

Book Title _____ Chapter/Page(s) _____



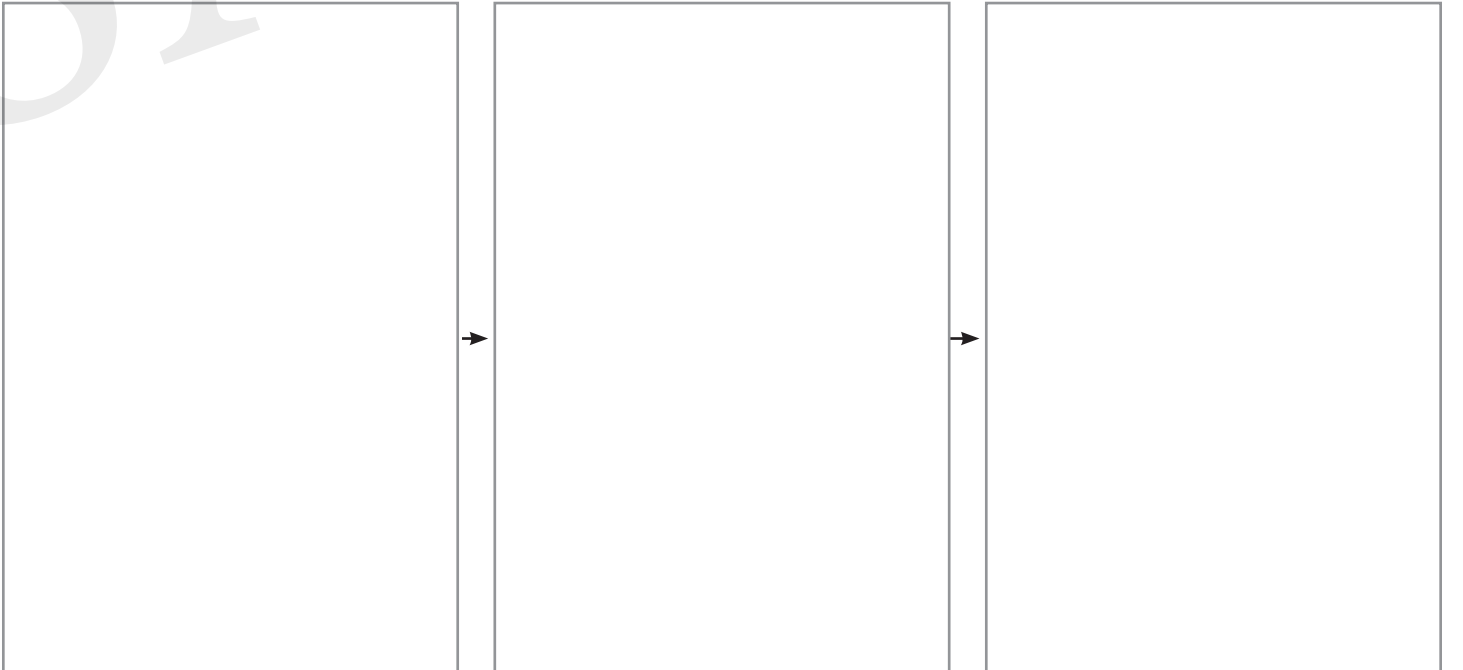
SAMPLE

Book Title _____ Chapter/Page(s) _____



SAMPLE

Book Title _____ Chapter/Page(s) _____



SAMPLE

SAMPLE

SAMPLE

<hr/> <hr/> <hr/> <hr/> <hr/> <hr/> <hr/> <hr/> <hr/> <hr/>	<hr/> <hr/> <hr/> <hr/> <hr/> <hr/> <hr/> <hr/> <hr/> <hr/>
<hr/> <hr/> <hr/> <hr/> <hr/> <hr/> <hr/> <hr/> <hr/> <hr/>	<hr/> <hr/> <hr/> <hr/> <hr/> <hr/> <hr/> <hr/> <hr/> <hr/>
<hr/> <hr/> <hr/> <hr/> <hr/> <hr/> <hr/> <hr/> <hr/> <hr/>	<hr/> <hr/> <hr/> <hr/> <hr/> <hr/> <hr/> <hr/> <hr/> <hr/>
<hr/> <hr/> <hr/> <hr/> <hr/> <hr/> <hr/> <hr/> <hr/> <hr/>	<hr/> <hr/> <hr/> <hr/> <hr/> <hr/> <hr/> <hr/> <hr/> <hr/>

<hr/> <hr/> <hr/> <hr/> <hr/> <hr/> <hr/> <hr/> <hr/> <hr/>	<hr/> <hr/> <hr/> <hr/> <hr/> <hr/> <hr/> <hr/> <hr/> <hr/>	
<hr/> <hr/> <hr/> <hr/> <hr/> <hr/> <hr/> <hr/> <hr/> <hr/>	<hr/>	<hr/> <hr/> <hr/> <hr/> <hr/> <hr/> <hr/> <hr/> <hr/> <hr/>
<hr/> <hr/> <hr/> <hr/> <hr/> <hr/> <hr/> <hr/> <hr/> <hr/>	<hr/> <hr/> <hr/> <hr/> <hr/> <hr/> <hr/> <hr/> <hr/> <hr/>	
<hr/> <hr/> <hr/> <hr/> <hr/> <hr/> <hr/> <hr/> <hr/> <hr/>	<hr/>	<hr/> <hr/> <hr/> <hr/> <hr/> <hr/> <hr/> <hr/> <hr/> <hr/>

SAMPLE